

BY-LAW NO. 1603

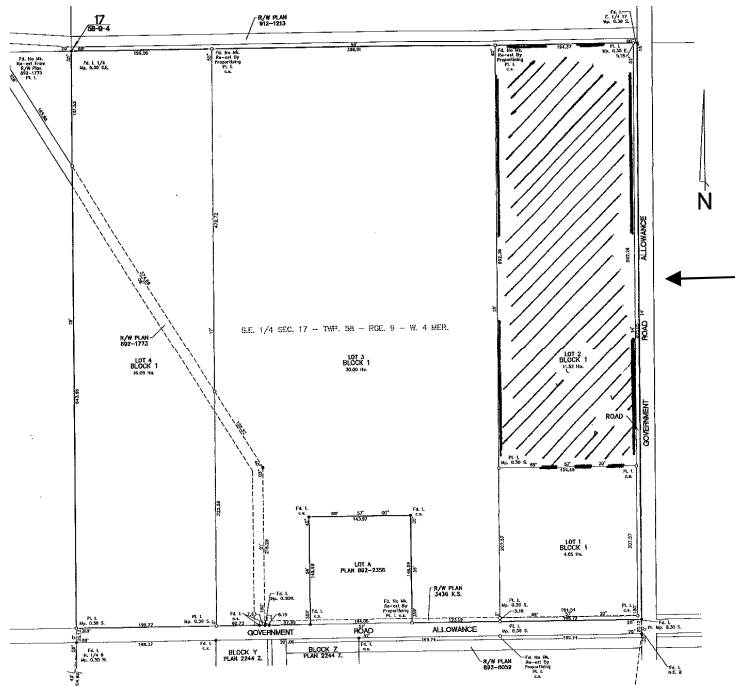
WHEREAS, it is deemed expedient to amend the Land Use Bylaw of the County of St. Paul No. 19 as set out in the Municipal Government Act, 2000 as amended.

NOW, THEREFORE, under the authority and subject to the provisions of the Municipal Government Act, 2000, as amended, and by virtue of all other powers it enabling, the Council of the County of St. Paul No. 19, hereby assembled, enacts as follows:

1. Bylaw No. 1486, Land Use District Map is hereby amended as follows:

FROM: Agricultural to Country Residential

FOR: PSE 17-58-9-W4



Read a first time in Council this 14th day of August, A.D. 2012.

Advertised the _____ day of _____, A.D. 2012, and the _____ day of _____, A.D. 2012 in the St. Paul Journal.

Read a second time in Council this day of September, A.D. 2012.

Read a third time in Council this day of September A.D. 2012 and duly passed
this day of August, A.D. 2012.

Reeve

Chief Administrative Officer