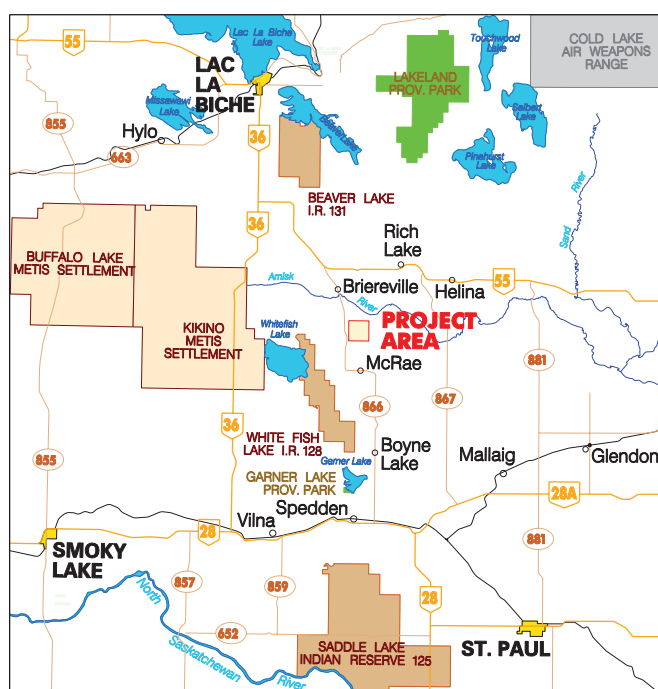




April 2012

## Whitefish Telecommunication Tower Replacement



### Regulatory Process

ATCO Electric is seeking approval from the Alberta Utilities Commission (AUC) and other agencies as required for the construction and operation of the proposed telecommunication tower.

For more information about how you can participate in the approval process required by the AUC, please refer to the enclosed brochure entitled *Public Involvement in Needs or Facilities Applications*.

### Project Need and Details

If approved, the proposed **Whitefish Telecommunication Tower** will be located on the current tower site at NE 32-62-12 W4M. Replacement of the existing Whitefish telecommunication tower is needed to support and enhance ATCO Electric's radio and data communication network.

The project will include the new tower and installation of related electrical and telecommunications equipment and removal of the existing 114 metre (m) tower.

The new telecommunication tower will be a steel lattice tower approximately 128 metres (m) high, and supported by guy wires. The tower will support four antennas: two VHF/UHF antennas and two microwave antennas. Details may vary slightly with final plans.

### Why Are You Receiving This Project Information Package?

We are advising neighbouring landholders, agencies and other interested parties about plans to replace the existing Whitefish telecommunication tower located about 10 kilometres north of the community of McRae (please see site plan on page 3).

This package will provide you with important project information and outlines our public consultation process. We invite any comments, questions or concerns you may have. Please refer to page four for our contact information and details.

### What's Included In This Package

- Project information brochure
- Reply form and postage paid envelope
- Alberta Utilities Commission brochure *Public Involvement in Needs or Facilities Applications*



## Design Requirements

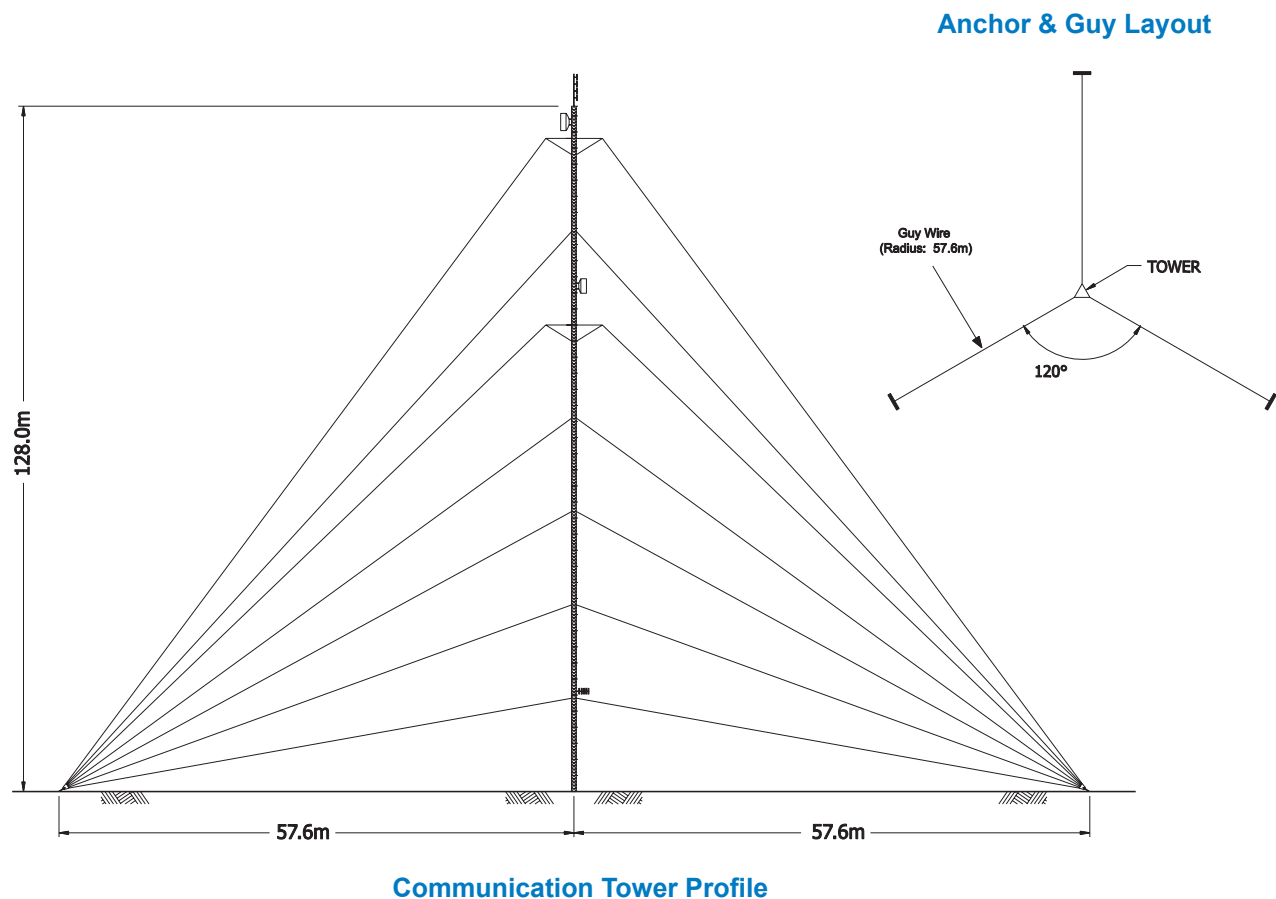
The tower will be equipped with beacons to meet Transport Canada aeronautical safety requirements. The tower will also operate in compliance with Health Canada's Safety Code 6 for the protection of the general public and local radio environment.

Design and construction will meet applicable standards and will follow good engineering practices, including structural integrity.

## Impacts

No significant adverse environmental effects are expected. Neighbouring landholders may notice some increased traffic and noise during construction. The requirement for an environmental assessment under the Canadian Environmental Assessment Act has yet to be determined for this project.

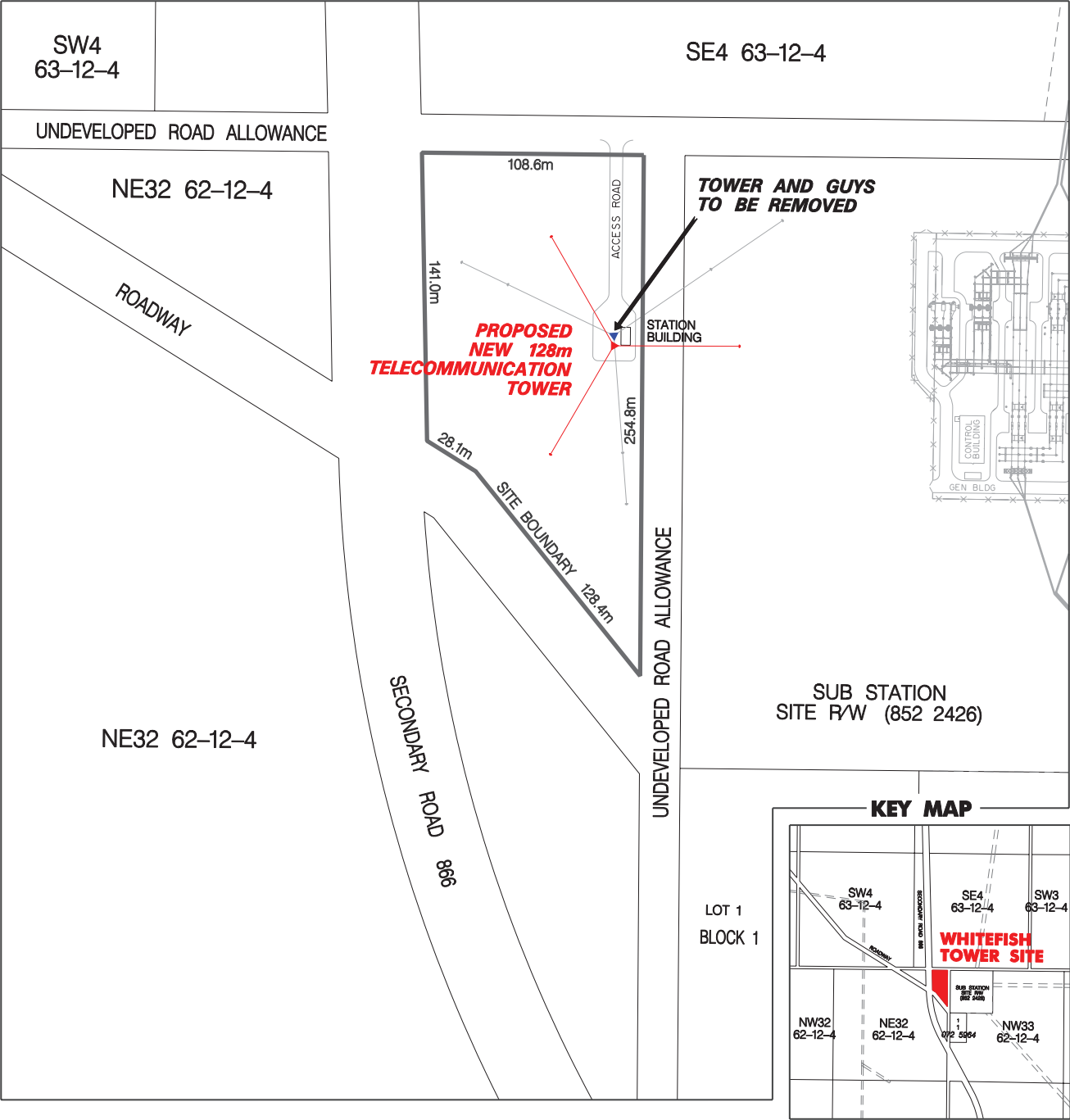
## Whitefish Tower Site Typical Structure





Whitefish Telecommunication Tower Replacement Site Plan

Geographic Coordinate Value at Tower Site Boundary Centroid = N54.4121, W111.7542





## Proposed Timeline\*

### April 2012

Consultation with landowners and agencies

### May 2012

Submission of the Facilities Application to the Alberta Utilities Commission (AUC)

### January 2013

If approval is granted by the AUC, construction will commence

### February 2013

Facilities completed and operating

\*Timing may be adjusted to reflect final plans.

## Contact Us

Your comments and concerns are important to us. Please contact us toll free **1-855-420-5775** or direct:

**Jesse Sirota**, Project Planner  
ATCO Electric  
10035-105 Street  
Edmonton, AB T5J 2V6

**Phone:** 780-508-4762

**Fax:** 780-420-5030

**Email:** [consultation@atcoelectric.com](mailto:consultation@atcoelectric.com)

**Website:** [www.atcoelectric.com](http://www.atcoelectric.com)

## ATCO Electric

Albertans count on us for the safe, reliable and cost-effective delivery of electricity to their homes, farms and businesses. We have delivered electricity to Albertans for 85 years. Headquartered in Edmonton, ATCO Electric has 38 service offices serving nearly two-thirds of the province in northern and east-central Alberta.

We help keep the lights on across the province by building, operating and maintaining approximately 72,000 kilometres of transmission and distribution power lines. We also operate an additional 10,000 kilometres of distribution power lines on behalf of Rural Electrification Associations.

We are committed to responsible development and environmental practices. We conduct an open and transparent consultation process, carefully considering the impacts to landowners, communities and the environment.

