



# REPORT

County of St. Paul

Water Policy

Council Visioning Session – Summary



This report is prepared for the sole use of County of St. Paul. No representations of any kind are made by Urban Systems Ltd. or its employees to any party with whom Urban Systems Ltd. does not have a contract.

3144.0005.01 / October 25, 2011

**URBANSYSTEMS.**

#200, 10345-105 Street, Edmonton AB

T5J 1E8

Telephone: 780-430-4041



## TABLE OF CONTENTS

1.0 THE PROCESS ..... 1

2.0 CREATING THE VISION ..... 2

3.0 CORE VALUES ..... 3

4.0 GUIDING PRINCIPLES..... 4

5.0 NEXT STEPS ..... 4

### APPENDICES

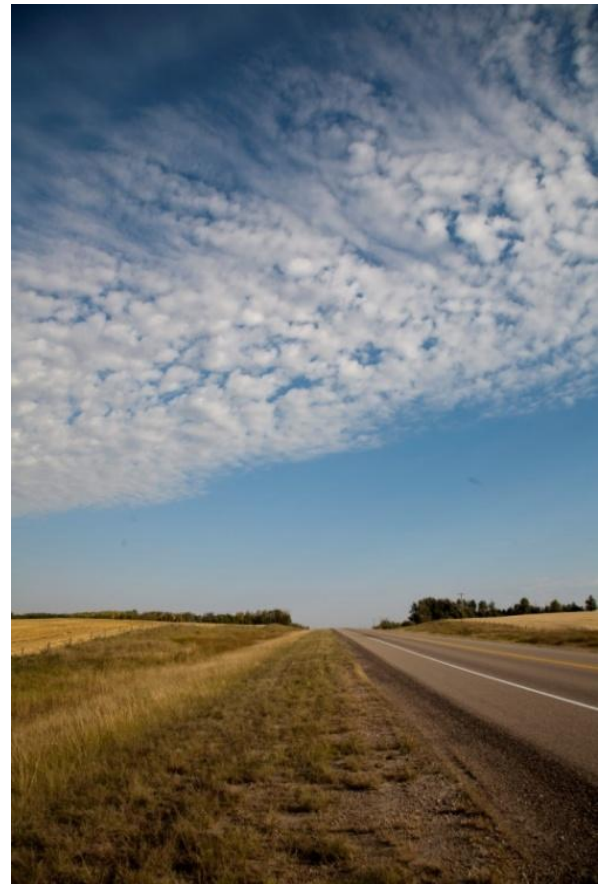
Appendix A - Presentation - County of St. Paul Council Visioning Session - October 13, 2011

Appendix B – County of St. Paul – Sustainable Priorities



## EXECUTIVE SUMMARY

The County of St. Paul is in the process of developing water policies to address the county's approach in providing water services to its residents, specifically in Ashmont and Lottie Lake. As part of this exercise, the Council attended a visioning workshop on October 13, 2011 to establish the vision for the county, identify core values and develop guiding principles that will inform the development of the policies. This memorandum summarizes Council's process for and results of the visioning session.



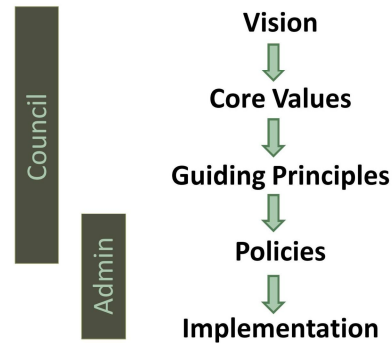


## 1.0 THE PROCESS

The Work Program submitted to the County in September 2011 outlined the process to develop the water policies and the implementation plan. Urban Systems reviewed this process with Council to begin the workshop:

- A) Council Visioning Session (current task)  
Council establishes the vision, core values and guiding principles for the County.
- B) Develop Water Policies  
Using the results of the visioning session, the water policy document will be prepared and presented to Council to be adopted.
- C) Determine Cost of Water  
The levels of service and user types will be defined and the cost of water will be determined for each user type.
- D) Public Communication and Consultation  
Council will share the vision, core values and guiding principles with public, as well as gather their feedback on policies, levels of service and cost of water.
- E) Develop Implementation Plan  
Based on the policies, cost of water and public feedback, a plan will be prepared to assist Administration in implementing the policies.

## The Process



On October 13, 2011, Council participated in a workshop to establish their vision, core values and guiding principles. The following sections outline the process and results of this visioning session.





## 2.0 CREATING THE VISION

After the introduction and reviewing the goals of the workshop, the council started the visioning session. They were asked to think about questions such as:

- How do the residents describe their community in 30 years?
- What will the County of St. Paul represent?
- What is your legacy for future generation?

Copies of the County's "Sustainable Priorities" were distributed and reviewed by Council. Council was asked to reflect on how these priorities would shape the future of the county and discuss some of the highlights of these priorities. Some of these highlights include:

- Mixed use and balance
- Working towards common goals
- Diversified economy that includes both agriculture and oil industries
- Sustainable environment that supports the quality and quantity of agricultural land
- Striving for higher standard of life
- Retention of local residents
- Partnership and collaborative approaches
- Enhancement and betterment of services provided to residents



The council was then divided into three teams with the task of writing a vision statement. The teams spent 15 minutes and each came up with the vision statement:

Team 1:

The County of St. Paul is where people, land, water and natural resources come together for the benefit of all.

Team 2:

The County of St. Paul is a community that embraces total character with diverse economies providing residents with food quality of life through health care, recreation and schools.

- Honoring people for who they are
- Meeting the needs of the community

Team 3:

The County of St. Paul is committed to continue to enhance the quality of life of its diverse population while maintaining rural characteristics in balance with industrial growth.

There are few common themes that are reflected in all three statements:

- Quality of life



- Balance of rural character with industry
- The notion of community/people
- Recognising diverse population

After reviewing the common themes and discussion around three statements, Council created the County of St. Paul Vision Statement.

The VISION:

THE COUNTY OF ST. PAUL IS A VIBRANT COMMUNITY WHICH VALUES A HIGH QUALITY OF LIFE, BALANCING OUR RURAL HERITAGE WITH A DIVERSE ECONOMY.

### 3.0 CORE VALUES

After creating the vision, the Council proceeded with defining their core values. These values must stand the test of time and will not change, even if the circumstances change in future.

The group discussed some of their values and how they will shape their guiding principles.

These values included:

- Balance
- Respect
- Fairness
- Integrity
- Accountability
- Democracy
- Collaboration
- Preservation

- Education
- Service/Serving
- Fertility

Each participant was then asked to write down 5 of the above values as their selected core values. The result of this exercise is reflected in the table below:

VALUES	NUMBER OF VOTES
Balance	6
Respect	7
Fairness	4
Integrity	6
Accountability	8
Democracy	4
Collaboration	2
Preservation	3
Education	1
Service/Serving	5
Fertility	1

Based on the result of the voting exercise, the County of St. Paul Core Values are:

CORE VALUES:

- BALANCE
- RESPECT
- FAIRNESS
- INTEGRITY
- ACCOUNTABILITY
- SERVICE/SERVING



#### 4.0 GUIDING PRINCIPLES

The guiding principles are defined by the core values and will guide the county's actions to achieve its vision. They set the framework for the policies and their implementation.

The Council agreed on the following as their guiding principles:

- 1) Balance the rural character of the County with regional vitality, orderly growth and diversified economic opportunities.
- 2) Promote environmental stewardship and conservation of natural resources.
- 3) Foster innovation and research to improve the community.
- 4) Seek collaborative approaches for effective service delivery and quality of life improvement.
- 5) Achieve operating cost reductions and operations stability over time to provide affordable services to residents.

#### 5.0 NEXT STEPS

After reviewing the summary report, the council will decide whether to officially adopt the above as the County's vision, core values and guiding principles. Following the official approval, the results of this exercise can be shared with the

residents through a newsletter, information on the County website, and any other mode deemed useful. Urban Systems will prepare the material for public information as stated in the work program.

Moving forward, Urban Systems will use the approved guiding principles to develop water policies. These policies will be submitted to the County by November 18, 2011 for their review and discussion.







# APPENDIX A


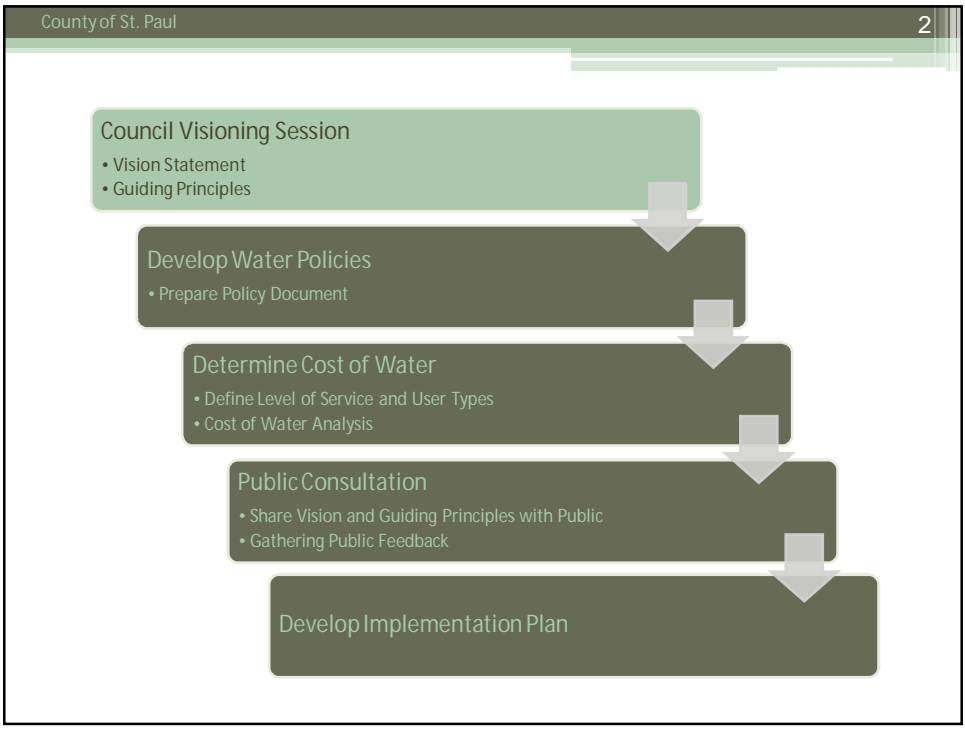
Presentation  
County of St. Paul Council Visioning Session  
October 13, 2011



# County of St. Paul Council Visioning Session

October 13, 2011

County of St. Paul 3

## In today's session we will:

- Discuss how the vision, values and guiding principles impact the policies
- Discuss County's Vision for future
- Create a Vision Statement for the County
- Define the core values that are reflected in the Vision
- Develop the guiding principles resulting from the Vision and the core values
- Outline the next steps

County of St. Paul 4

## The Process

```

    graph TD
      Vision --> CoreValues[Core Values]
      CoreValues --> GuidingPrinciples[Guiding Principles]
      GuidingPrinciples --> Policies
      Policies --> Implementation
  
```


The diagram illustrates the process flow. On the left, two vertical bars represent the entities involved: 'Council' (the taller bar) and 'Admin' (the shorter bar). To the right, a vertical sequence of five steps is shown, connected by downward-pointing arrows: Vision, Core Values, Guiding Principles, Policies, and Implementation.

County of St. Paul 5

## The Vision

In 30 years....

- How do the residents describe their community?
- What does the County of St. Paul represent?
- What is your legacy?



County of St. Paul 6

## Creating the Vision

- Rural character
- Sustainable environment that supports the quality and quantity of agricultural land
- Vibrant agricultural industry
- Partnership and collaborative approaches
- Enhancement and betterment of services provided to residents
- Foster innovation and research



## Core Values

- They must stand the test of time
- They do not change even if the circumstances change
- They are reflected in your Vision
- They set the framework for the guiding principles



## Core Values

- Sustainability
  - Agricultural Economy
  - Preserving land and conservation
- Collaboration
- Diversity
- Innovation
- Fairness
- Respect
- Efficiency
- Quality
- Service



## Guiding Principles

- They are defined by your values
- They guide your actions to achieve your Vision
- They set the framework for the policies and their implementation



## Guiding Principles

1. Preserve the rural character of the County
2. Ensure environmental stewardship and conservation of natural resources
3. Promote regional vitality, orderly growth and diversified economic opportunities that are compatible with rural environment
4. Seek collaborative approaches for effective service delivery and quality of life improvement
5. Foster innovation and research to improve the agricultural industry
6. Achieve operating cost reductions and operations stability over time to provide affordable services to residents

## Next Steps

- Compile the results of the session and prepare a summary report
- Develop Water Policies based on the guiding principles
- Review the Water Policy document with Council and Administration





# APPENDIX B

County of St. Paul  
Sustainable Priorities

## Sustainable Priorities

The County of St. Paul believes that to be a sustainable community we must:

- Preserve the rural character of the County through the conservation of the quantity and quality of the agricultural land, maintaining the beauty and accessibility of the lakes, and good partnerships with urban neighbors
- Encourage environmentally sound and sensitive development of recreation, residential, lake-oriented residential and the overall County
- Allow development in such manner as to limit the removal of higher capability agricultural land, not put undue pressure on the natural environment or the provision of services, not cause unacceptable adverse effects on the agricultural economy and community
- Utilize natural resources to promote economic diversification which is compatible with the rural environment and environmentally sound, so that all residents may enjoy optimum working and living standards
- Continue to support and promote sustainable and enhanced agricultural research, activities and practices to achieve the rational diversification and intensification of agricultural activities and a profitable and sustainable future for producers
- Seek inter-municipal plans and cooperative service agreements such that they continue to support better relationships among rural and urban residents, better services and efficiency of services
- Encourage the development and expansion of institutional facilities to meet the educational, social, religious and cultural needs of residents
- Ensure the provision of essential services such as emergency services, health services, education and gathering places for social and religious activities, to support the renewal and enhancement of vital components of rural lifestyle and quality of life
- Support the continued, orderly growth of the incorporated urban centers so they can continue to provide a range of commercial, industrial, residential and institutional services to the wider community
- Minimize the negative impact on the land by encouraging good stewardship of the land
- Minimize conflicts between agricultural and non-agricultural land users