

COUNTY OF ST. PAUL NO. 19

BY-LAW NO. 1620

A By-law of the County of St. Paul No. 19 in the Province of Alberta to amend Land Use Bylaw No. 1486.

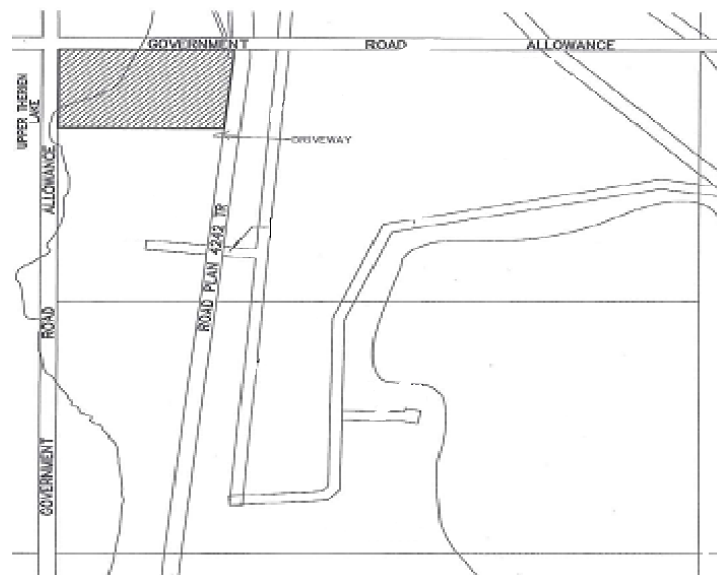
WHEREAS, it is deemed expedient to amend the Land Use Bylaw of the County of St. Paul No. 19 as set out in the Municipal Government Act, 2000 as amended.

NOW, THEREFORE, under the authority and subject to the provisions of the Municipal Government Act, 2000, as amended, and by virtue of all other powers it enabling, the Council of the County of St. Paul No. 19, hereby assembled, enacts as follows:

1. Bylaw No. 1468, Land Use District Map is hereby amended as follows:

FROM: Urban Expansion to Country Residential (2)

FOR: NW 34-57-9-W4



Read a first time in Council this 11th day of December, A.D. 2012.

Advertised the day of , A.D. 2012, and the day of , A.D. 2012 in the St. Paul Journal.

Read a second time in Council this day of , A.D. 2013.

Read a third time in Council and duly passed this day of , A.D. 2013.

Reeve

Chief Administrative Officer